

Usage For Skived, Pre-Glued Aprons



Information On Marks And Symbols

In the operating instructions, the following designations or marks and symbols are used for especially important information:

The work and/or operating steps are marked with a listing arrow.
Execute the steps in the indicated order.

- The lists are marked with the dash.



Danger

This is a warning about situations entailing imminent danger, which inevitably result in extremely serious injuries or death, if the indicated instruction is not complied with exactly.



Warning

Draws attention to a possibly dangerous situation that could result in extremely serious injuries or death, if the indicated instruction is not complied with exactly.



Attention

This is a warning about situations entailing possible danger, which could result in medium or light injuries, if the indicated instruction is not complied with exactly.



Note

This is a warning about situations entailing possible danger, which could result in damage to property, if the indicated instruction is not complied with exactly.



Information

This is a note indicating useful information for safe and appropriate handling and use.

Legal notes / Copyright note / Adress

This manual must be handed out to persons using the described equipment. Wrong use of the equipment can only be avoided if the manual is always available!

Subject to alterations

Copyright 28.03.2022 by Rieter Components Germany GmbH

Reactivator Pen

Reactivation of the Accotex Skived, pre-glued spinning aprons by the use of an applicator pen filled with the following solvents recommended by Accotex:

- Ethyl acetate or
- Methyl ethyl ketone

Our recommendation is based on our best knowledge and experience. Since the use of the solvents is out of our control We can not give any guarantee regarding performance due to the solvents used.

This causes the valve in the pen to open and the reactivating solvent to flow out. The tip of the pen will become soaked and can be spread then on the pre-glued, cut apron surfaces. As the reactivating solvent is depleted occasionally depress the pen to maintain a wet trip.



Safety and protective measures

- The pen filled with the recommended reactivating solvent has to be labeled with the required safety labels and information to prevent misuse
- The reactivating solvents are highly inflammable and require the usual safety precautions to prevent fire
- The fumes are slightly toxic
- Use only in a well ventilated area
- Avoid contact with skin and use protective glasses to prevent eye contact with the reactivating solvent
- If accidental contact should occur, wash the eye thoroughly with copious amounts of water or saline solution
- Wash affected skin thoroughly with soap and water
- If skin irritation occurs, call a doctor immediately
- The lids of containers must be replaced immediately after use, otherwise the reactivating solvent will evaporate
- Any remaining reactivating solvent must not be disposed of in waste water.



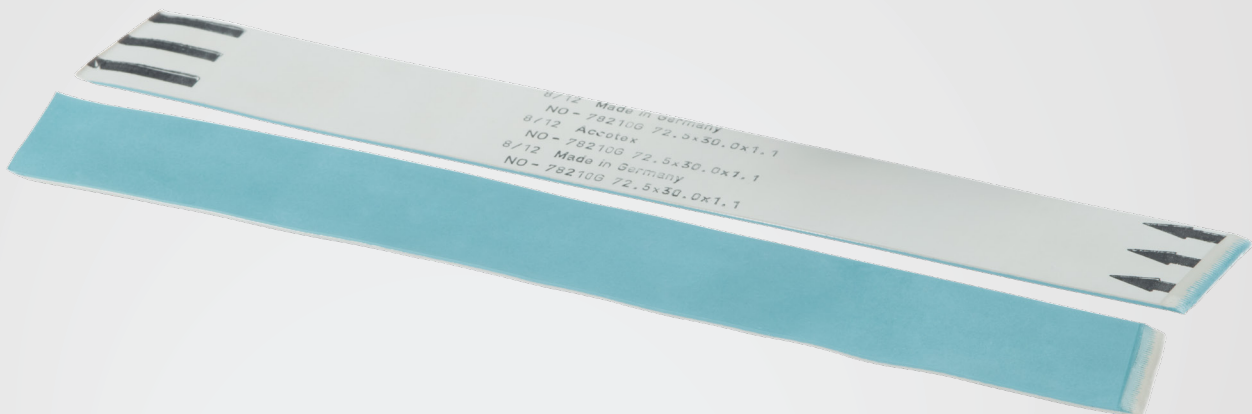
Storage

The pre-glued, skived aprons should be kept away from sun light and therefore should be stored in closed boxes under mill conditions. Under those conditions the storage time of the pre-glued, skived aprons is 6 months.

Preparation

Assure that the applicator pen is filled with the suitable solvent which is recommended by Saurer Technologies. The applicator tip should be a wet before usage. This is done by pointing the pen down and depressing the tip slowly.

This causes the valve in the pen to open and the reactivating solvent to flow out. The tip of the pen will become soaked and can be spread then on the pre-glued, cut apron surfaces. As the reactivating solvent is depleted occasionally depress the pen to maintain a wet trip. The range is designed to meet the demands of the glass fibre yarn industry. Accotex offers apron solutions, covering the whole spectrum of glass fibre yarns, from coarse (G type) to ultra-fine filaments (D – BC type). In close cooperation with our customers, we have developed a product range with optimal characteristics for each individual application.



Glueing Instructions



1. Application

Position the wet trip of the pen as mentioned above on the pre-glued, skived, bonding area of the spinning apron. The reactivating solvent should be applied uniformly and liberally by a single stroke on both skived, pre-glued sections of the spinning apron. The hardening time and the strength of the bonding is depending on the level of reactivating solvent applied. The lower the level of reactivating solvent applied the shorter the resulting hardening time and the higher the resulting bonding strength.

2. Reactivating and compressing



Note

Don't join the pre-glued sections while they are still wet. Allow the reactivated sections to air dry for about 10 seconds (join together when the reactivated glue on both cut surfaces has reached a silky appearance, that is no evidence of liquid solvent).

The skived reactivated sections of the spinning apron should be joined together carefully (notice the direction arrows) and held together between the fingers with high pressure for around 10 seconds followed by moderate pressure for another 10 seconds.

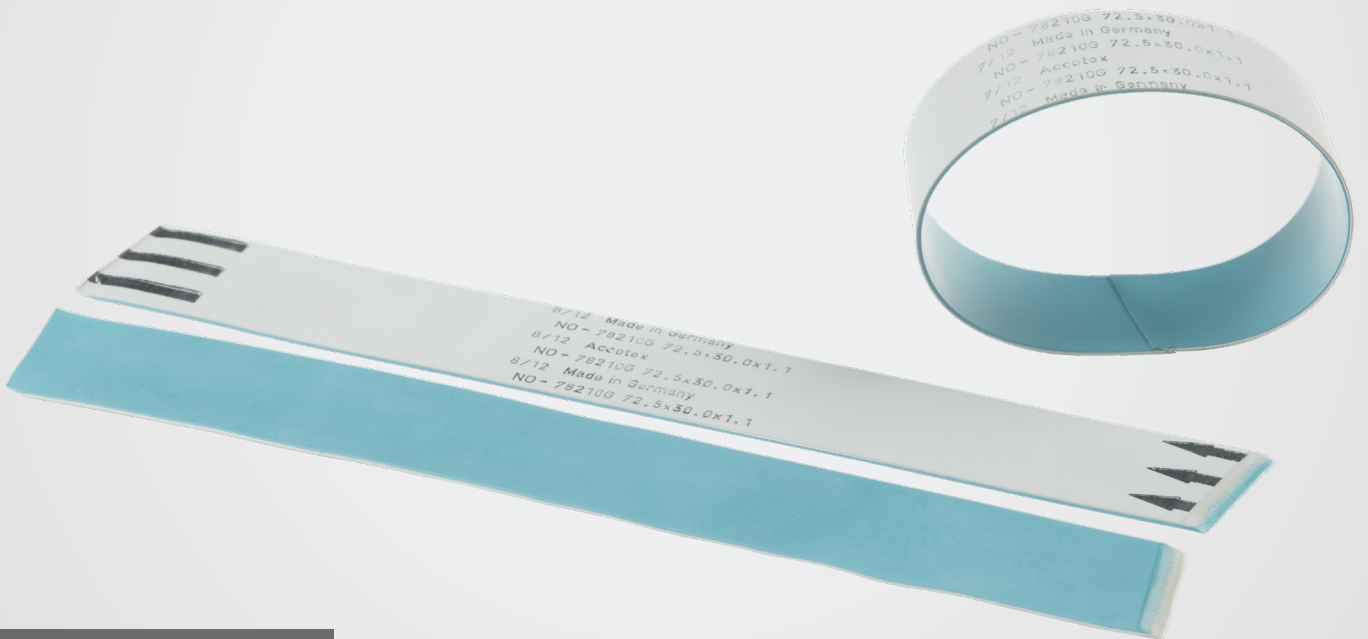
3. Curing

The glued apron surfaces should cure for approximately another 3 minutes before they can be subjected to the tension of the tension device.

Rieter Components Germany GmbH

Accotex
Branch Muenster
Gustav-Stresemann-Weg 1
48155 Muenster
Germany
T +49 251 60938 0
info@accotex.com

www.accotex.com



The data and illustrations in this brochure and on the corresponding data carrier refer to the date of printing. Accotex reserves the right to make any necessary changes at any time and without special notice. Accotex systems and Accotex innovations are protected by patents.

3471-v1 en 2203