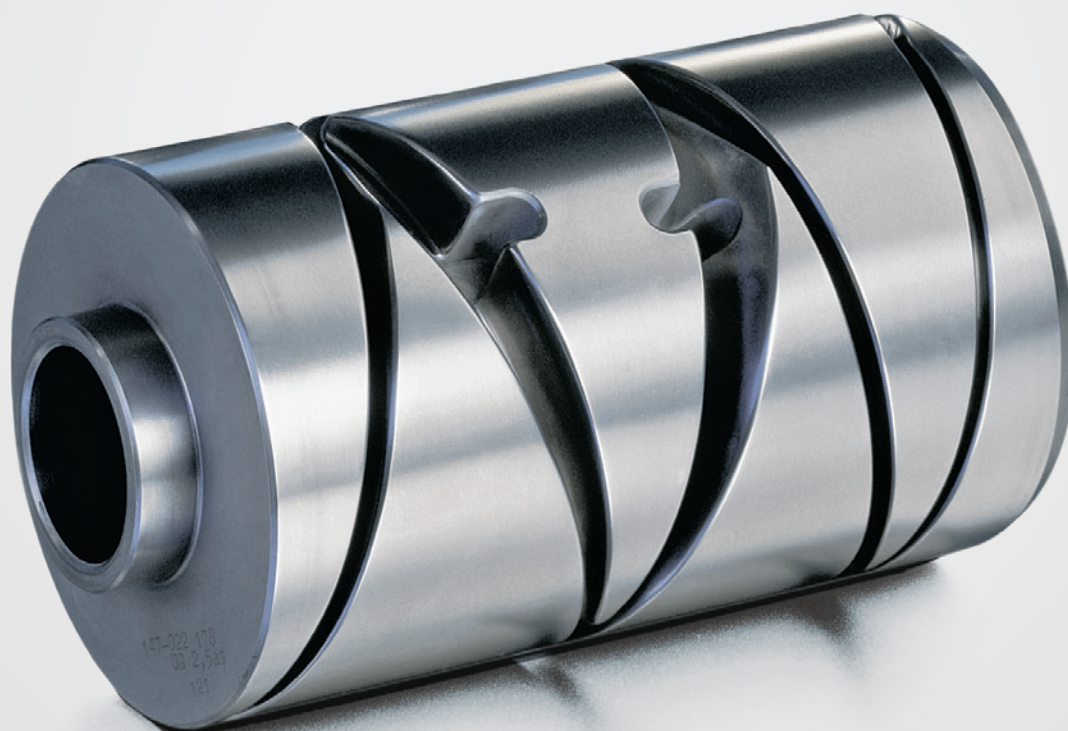


Automatic package winding
Autoconer 338, 5, X5, 6, X6

RIETER

Autoconer

Autoconer splicing components and original parts



Benchmark in winding
and splicing quality



Content

Rieter spare parts provide the know-how that uses the full potential of your machine. They have been thoroughly tested in hardness applications and prove their value a thousand-fold in spinning mills worldwide.

Discover original parts for your winder, from classic to the newest generation, throughout the complete life cycle, to sustainably increase the lifetime of your machine.

4	Splicing components
7	Yarn guide drums, holding rings, adapter plates
8	Winding head
17	Central unit
25	Splicer
32	Tensioner
34	Creeling unit
36	Tube conveyor
36	Package doffer
40	Bobbin feed, material flow
47	Diverse original parts, accessories
48	Recommendations

Splicing Components

Splicing technology

The splicer per winding unit replaced the splicer carriage. As a result of new textile applications and yarn structures, thermosplicers, injection splicers and elastosplacers have been developed. Splicing components and setting parameters have constantly been optimised – for maximum splicing quality in terms of optical appearance and strength, for maximum reproducibility and to reduce time-consuming manual settings and changeovers.

For all applications

You can splice all common yarns with our splicing technology. For special applications choose the Injection, Thermo or Elasto models. Your splicer comes ready for use, and with ceramic shears as standard.

The optimal choice of splicing components

Depending on fibre material, yarn count, direction of twist, level of twist etc., the selection of different opening tubes, prisms and guide plates can lead to optimal splicing quality. Rieter Service Manager will be happy to advise you on the right choice for your applications.

Prisms standard

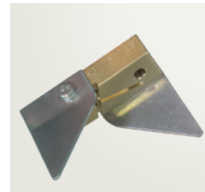
Autoconer 338, 5, X5, 6, X6



Prism DS 1	149-011.395
Prism DZ 1	149-011.393
Prism DZ 1/16.1	149-012.509
Prism DS 1/16.1	149-012.517
Prism DZ 3/16.1	149-012.577
Prism DS 3/16.1	149-012.584
Prism DZ 1/16	149-014.627
Prism DS 1/16	149-012.622
Prism DZ 3/16	149-012.629
Prism DS 3/16	149-012.635
Prism DS 1/16.1E	149-012.692
Prism DZ 1/16.1E	149-012.687
Prism DS 3	149-011.399
Prism DZ 3	149-011.397
Prism DS 3/16.1E	149-012.714
Prism DZ 3/16.1E	149-012.708

Injection splicer prisms

Autoconer 338, 5, X5, 6, X6



Prism DS 1 B	149-011.396
Prism DZ 1 B	149-011.394
Prism DS 1/16.1EB	149-019.076
Prism DZ 1/16.1EB	149-016.150
Prism DS 3 B	149-011.400
Prism DZ 3 B	149-016.520
Prism DS 3/16.1B	149-019.109
Prism DZ 3/16.1B	149-019.112
Prism DZ 1/16B	149-019.099
Prism DS 1/16B	149-019.097
Prism DZ 3/16B	149-019.094
Prism DS 3/16B	149-019.092
Prism DS 1 /13.2-EG/B	149-016.530
Prism DS 1/20.1-2EB	149-012.726
Prism DS 1/20.2-2EB	149-012.732
Prism LC 5/2B2 QCU	149-014.930
Prism LC 5/2.5B2 QCU	149-014.936
Prism LC 5/2.5B2 S QCU	149-014.923
Prism DS 3/16.1EB	149-016.515
Prism DZ 3/16.1EB	149-016.153
Prism DZ 3 B/8.5	159-003.022
Prism DZ 3 B/8.5M	159-004.309

Opening tubes

Autoconer 338, 5, X5, 6, X6



Retainer tube M	147-026.584
Retainer tube S	147-026.583
Retainer tube Z	147-026.582



Retainer tube S/2	147-019.669
Retainer tube Z/2	147-019.666

Covers

Autoconer 338, 5, X5, 6, X6



Cover E/13	148-022.712
Cover E/16	148-022.714
Cover E/20	148-022.716

Plates

Autoconer 338, 5, X5, 6, X6



Brake plate
159-000.688



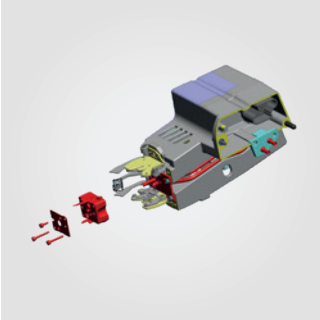
Covering metal sheet
159-000.676



Supporting sheet metal
159-000.683

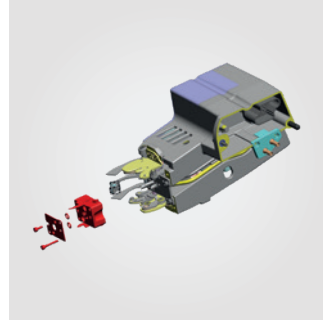
Splicing Components

**Quick-Change Unit
Autoconer 338**



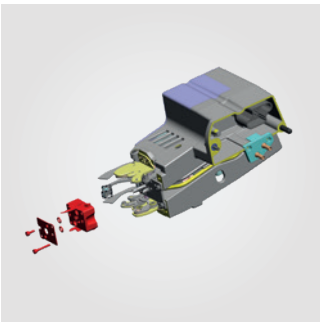
Quick-Change Unit
148-400.854

**Quick-Change Unit
Autoconer 5, X5**



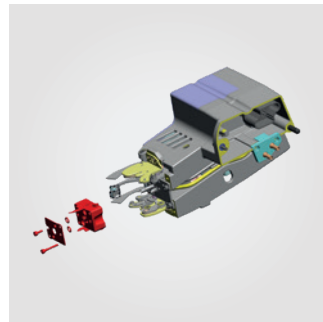
Quick-Change Unit
149-400.073

**Quick-Change Unit
Autoconer 6**



Quick-Change Unit
159-400.055

**Quick-Change Unit
Autoconer X6**



Quick-Change Unit
171-400.043

Yarn Guide Drums, Holding Rings, Adapter Plates

Yarn guide drums

Autoconer 338, 5, X5, 6, X6



Yarn guide drum UG 1.5S	147-026.665
Yarn guide drum UG 2S	147-023.824
Yarn guide drum UG 2AS	147-019.745
Yarn guide drum UG 2.5AS	147-022.178

Holding rings right side

Autoconer 338, 5, X5



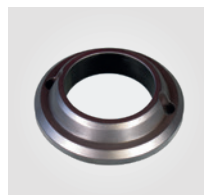
Holding ring 46,5 STEEL	148-023.955
Holding ring 54 STEEL	148-023.961
Holding ring 59 STEEL	148-023.967
Holding ring 68 STEEL	148-008.309



Holding ring 54,5 POLY	148-005.720
Holding ring 59 POLY	148-014.476
Holding ring 68 POLY	148-014.477

Holding rings right side

Autoconer 6, X6



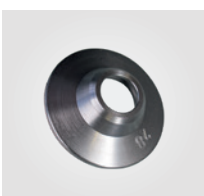
Holding ring 46,5 STEEL	149-013.840
Holding ring 54,5 STEEL	149-013.843
Holding ring 59 STEEL	149-013.846
Holding ring 68 STEEL	148-008.309



Holding ring 54,5 POLY	148-005.720
Holding ring 59 POLY	148-014.476
Holding ring 68 POLY	148-014.477

Adapter plates left side

Autoconer 338, 5, X5, 6, X6



Adapter plate 18	148-009.510
Adapter plate 28	148-004.618
Adapter plate 33	148-004.620
Adapter plate 54	148-005.232



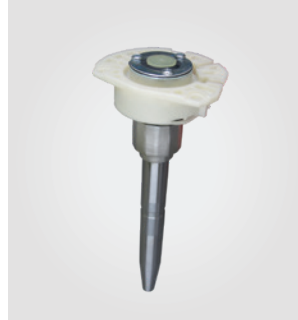
Cap DRUM WITH STARTING RING	149-016.081
Cap DRUM WITHOUT STARTING RING	149-016.079
Cap PRECIFX WITH STARTING RING	149-016.083
Cap PRECIFX WITHOUT STARTING RING	149-016.082

Original Parts Winding Head

Bearing and drum drive Autoconer 338



Stator
149-023.769

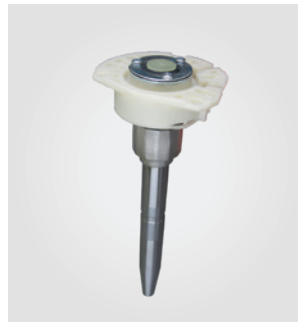


Drum shaft
159-003.692

Bearing and drum drive Autoconer 5, X5



Stator
159-003.691



Drum shaft
159-003.692



Hall-Sensor A/B
149-660.203

Bearing and drum drive Autoconer 6, X6



Drum motor
159-005.526

**Package cradle, cradle shock absorber
Autoconer 338**



Opener arm
149-021.657



Cradle shock absorber
148-023.484



Magnetic coil
148-005.851



Ball cage support
C12.95
148-023.683



Locking lever
146-006.901



Coupling rod
148-021.877



Damping washer
147-032.329



Cover
RIGHT 6"
148-019.191



Cylindrical torsion spring
148-000.541



Lever
148-023.365



Cradle shock absorber
148-023.485



Cover
148-012.863

Original Parts Winding Head

Package cradle, cradle shock absorber Autoconer 338



Jointed head
148-023.685

Package cradle, cradle shock absorber Autoconer 5, X5, 6, X6



Rubber bearing
148-022.915



Opener arm
149-021.657



Coupling rod
148-021.877



Damping washer
147-032.329



Cover
RIGHT 6"
148-019.191



Cradle shock absorber
148-023.485



Cover
148-012.863



Jointed head
148-023.685

**Tube holder
Autoconer 338**



Hall-Sensor
148-660.114



Holding bush
148-004.607



Fastening piece
146-017.582

**Tube adaptor
Autoconer 338, 5, X5, 6, X6**



Cylinder
146-013.028



Guide bushing
146-016.881



Bearing shaft
138-010.197



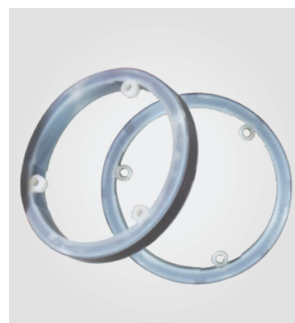
Bearing
138-012.554



Brake bush
159-002.678



Brake lining
159-003.834



Magnet wheel
148-010.827



Brake ring
159-004.430

Original Parts Winding Head

Tube holder

Autoconer 338, 5, X5, 6, X6



Tube adaptor T6
149-015.421



Hub
149-015.416



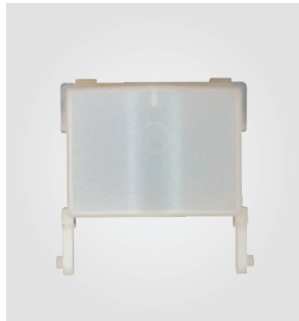
Holding plate
148-002.018

Operating unit

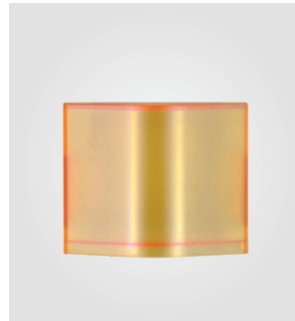
Autoconer 338



Operation unit
148-020.117



Pushbutton
RED-YELLOW LIGHT
148-013.082



Cover
YELLOW
148-014.235



Cover
RED
148-014.234



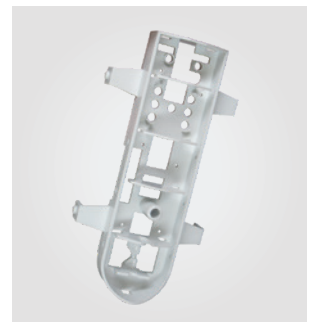
Pushbutton
BLACK
148-015.222



Cover
BLUE
148-015.923



Switch unit
148-015.223

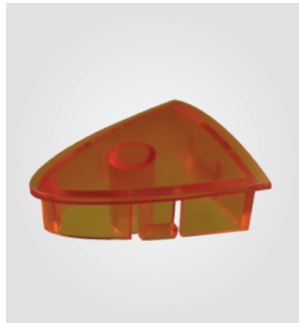


Housing
148-020.749

**Operating unit
Autoconer 5, X5, 6, X6**



Operation unit
149-008.496



Pushbutton
YELLOW
149-003.452



Pushbutton
RED
149-001.425



Pushbutton
BLACK
149-001.426



Switch unit
149-008.468



Display insert
149-009.951

Original Parts Winding Head

Winding unit electronics Autoconer 338



Winding unit control system D/V
148-915.634
Winding unit control system RM
148-915.633



Printed circuit board
148-670.155



Thermosplicer output stage
148-670.207

Winding unit electronics Autoconer 5, X5



Power supply unit
171-670.030



Winding head drive unit
171-670.033



Winding head computer
149-670.141



WCAN-L stepper
149-670.061



WCAN stepper
149-670.109



WCAN triple stepper
149-670.104

Winding unit electronics Autoconer 6



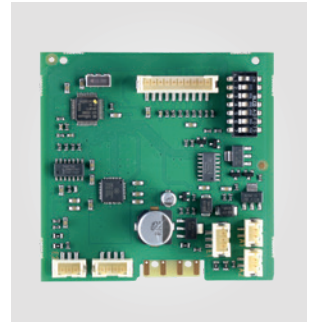
Winding head drive unit
171-670.033



Winding head computer
149-670.081



WCAN-L-stepper
159-670.001



WCAN-stepper
149-670.109



WCAN triple stepper
159-670.002

Original Parts Winding Head

Winding unit electronics Autoconer X6



Winding head drive unit
171-670.033



Winding head computer
171-670.021



WCAN-L-Stepper
159-670.001



WCAN-stepper
159-670.010



WCAN triple stepper
159-670.002

Original Parts Central Unit

Suction nozzle and gripper arm Autoconer 338



Upper yarn sensor
149-656.265



Shutter housing
148-024.061



Comb strip
0.3
148-006.101



Protective covering
148-004.516



Half of cutter
149-006.490



Scissors blade
149-006.487



Gripper arm tube
148-022.740



Gripper arm shutter
148-021.298



Seal
159-004.615



Locking lever
148-021.165



Actuating rod
148-023.894



Spring-loaded latch
149-010.311

Original Parts Central Unit

Suction nozzle and gripper arm Autoconer 5, X5



Upper yarn sensor
159-655.074



Toothed belt
390mm
149-008.862
Toothed belt
420mm
149-000.915



Comb strip
Vario
149-018.711
Comb strip
0.5
149-013.708



Half of cutter
149-006.490



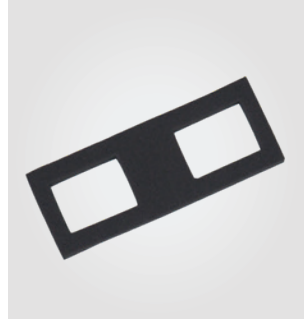
Scissors blade
149-006.487



Hall-Sensor
820mm
149-660.105



Gripper arm shutter
148-021.298



Seal
159-004.615



Spring-loaded latch
149-010.311

Suction nozzle and gripper arm Autoconer 6



Upper yarn sensor
159-655.074



Toothed belt
390mm
149-008.862
Toothed belt
420mm
149-000.915



Comb strip
Varioclip
149-020.239
Comb strip
0.5
159-000.364



Half of cutter
149-006.490



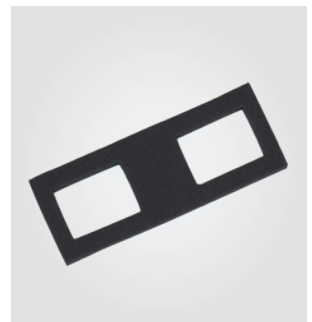
Scissors blade
149-006.487



Hall-Sensor
820mm
149-660.105



Gripper arm shutter
148-021.298



Seal
159-004.615



Spring-loaded latch
149-010.311

Original Parts Central Unit

Suction nozzle and gripper arm Autoconer X6



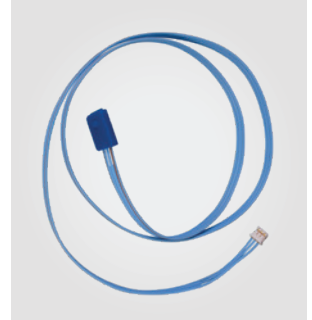
Upper yarn sensor
159-655.074



Toothed belt
390mm
149-008.862
Toothed belt
420mm
149-000.915



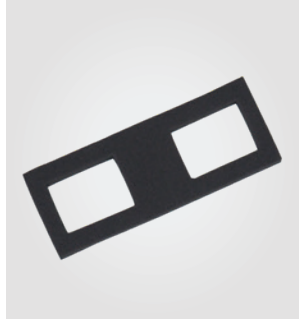
Comb strip
Varioclip
149-020.239
Comb strip
0.5
159-000.364



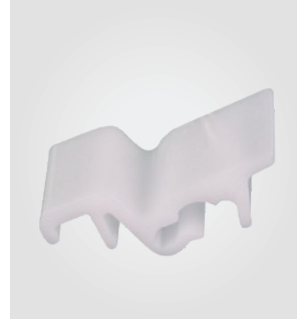
Hall-Sensor
820mm
149-660.105



Gripper arm shutter
148-021.298



Seal
159-004.615



Spring-loaded latch
149-010.311

Valves and automatic drive Autoconer 338



Directional control valve
2/2
159-004.528



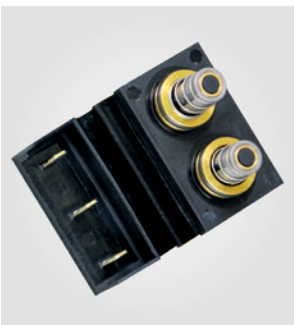
Directional control valve
3/2
852-130.078



Directional control valve
3/2
852-130.045



Valve
159-003.826



Control valve
148-023.155



Gearbox
148-024.159



Pilot motor
148-024.160



Motor
886-164.006



Cam roller
832-698.009

Original Parts Central Unit

Valves

Autoconer 5, X5



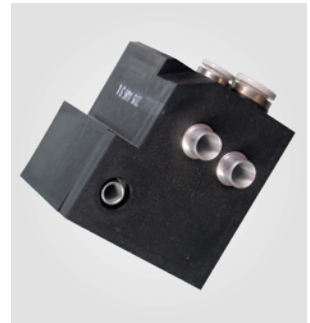
Directional control valve
3/2
852-130.078



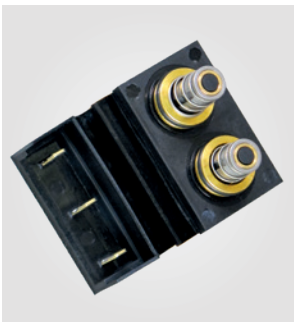
Directional control valve
3/2
852-130.045



Valve block
159-005.422



Valve
159-003.827



Control valve
148-023.155

Valves

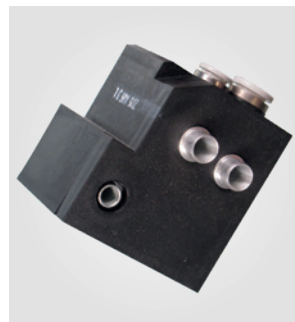
Autoconer 6, X6



Directional control valve
3/2
852-130.078



Valve block
159-005.422



Valve
159-003.827



Control valve
159-003.362

**Component carrier, waxing unit
Autoconer 338**



Yarn trap
148-006.425



Yarn guide unit
WITH PARAFFINEUR
148-019.691
Yarn guide unit
WITHOUT PARAFFINEUR
148-019.692



Step motor
148-004.802



Wax limit stop
0 **148-011.856**
Wax limit stop
0.2 **148-011.857**
Wax limit stop
0.4 **148-011.858**



Carrier
146-014.427



Lever
148-004.188



Yarn tension sensor
149-023.552

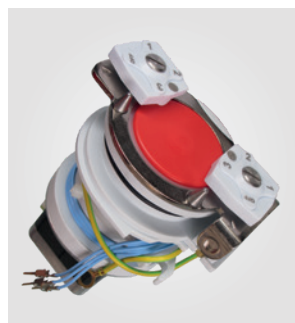
**Component carrier, waxing unit
Autoconer 5, X5**



Component carrier
149-015.853



Yarn trap
149-019.452



Waxing device
149-012.377



Wax shaft
149-011.036

Original Parts Central Unit

Component carrier, waxing unit Autoconer 5, X5



Limit stop
LEFT 159-000.910
Limit stop
RIGHT 159-000.911



Yarn tension sensor
149-023.552

Component carrier, waxing unit Autoconer 6, X6



Component carrier
159-001.873



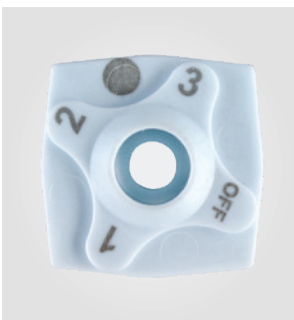
Yarn trap
159-003.244



Waxing device
159-003.675



Wax shaft
149-011.036



Limit stop
LEFT 159-000.910
Limit stop
RIGHT 159-000.911



Yarn tension sensor
159-000.755

Original Parts Splicer

Standard splicer Autoconer 338



Cam follower
148-020.126



Cam roller
148-007.859



Coupling half
148-022.509



Exhaust air duct
148-000.406



Pull rod
148-002.204



Pull rod
Z
148-002.205



Air distributor
148-023.279



Distributor
146-013.323



Scissors plate
STEEL
148-024.117



Half of cutter
STEEL
148-002.746



Leaf spring
C
159-004.505



Lid lever
159-004.003

Original Parts Splicer

Standard splicer Autoconer 338



Ball cup
Ø 6
836-266.002



O-ring
6X2
903-770.002



Pointer
148-000.422



Bearing support
148-002.632



Air distributor
149-001.953



Air distributor
QCU
149-023.600



Distributor
146-013.323



Distributor
QCU
159-001.637



Scissors plate
STEEL
149-018.749



Half of cutter
FS
149-017.015

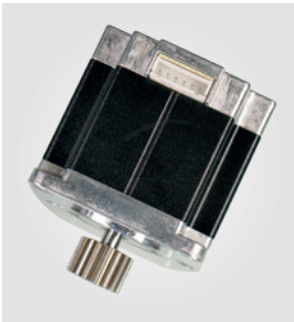


Half of cutter
STEEL
148-002.746



Leaf spring
C
159-004.505

**Standard splicer
Autoconer 5, X5**



Step motor
149-012.060



Lid lever
159-004.003



Ball cup
Ø 6
836-266.002



O-ring
6X2
903-770.002

**Standard splicer
Autoconer 6**



Air distributor
159-001.228



Distributor
NOT LINEN
159-004.210



Distributor
LINEN
159-001.636



Scissors plate
CERAMIC
159-004.771



Half of cutter
CERAMIC
159-003.656



Half of cutter
CERAMIC
159-003.657



Leaf spring
159-004.505



Step motor
149-012.060

Original Parts Splicer

Standard splicer Autoconer 6



Lid lever
159-004.003



O-ring
6X2
903-770.002

Standard splicer Autoconer X6



Air distributor
159-001.228



Distributor
NOT LINEN
159-004.210



Distributor
LINEN
159-001.636



Scissors plate
CERAMIC
159-004.772



Half of cutter
CERAMIC
159-003.673



Half of cutter
CERAMIC
159-003.674



Leaf spring
159-004.505



Step motor
149-012.060

**Standard splicer
Autoconer X6**



Lid lever
159-004.003



O-ring
6X2
903-770.002

**Thermosplicer
Autoconer 338**



Air heater
148-655.118



Prism heater
148-655.119



Pointer
148-000.422



Bearing support
148-002.632

**Thermosplicer
Autoconer 5, X5, 6, X6**



Air heater
149-000.250



Prism heater
149-004.174

Original Parts Splicer

Injection splicer Autoconer 338



Scissors plate
CERAMIC
159-003.652



Half of cutter
CERAMIC
159-003.656



Half of cutter
CERAMIC
159-003.657



Dosing valve
148-023.181



Reducing piece
149-006.936



Pointer
148-000.422



Bearing support
148-002.632

Injection splicer Autoconer 5, X5



Scissors plate
CERAMIC
159-003.653



Half of cutter
CERAMIC
159-003.656



Half of cutter
CERAMIC
159-003.657



Dosing valve
148-023.181

**Injection splicer
Autoconer 5, X5**



Reducing piece
149-006.936



Air distributor
QCU
149-023.601

**Injection splicer
Autoconer 6, X6**



Scissors plate
CERAMIC
159-004.774



Half of cutter
CERAMIC
159-003.656



Half of cutter
CERAMIC
159-003.657



Dosing valve
148-023.181



Reducing piece
149-006.936



Air distributor
159-001.226

Original Parts Tensioner

Yarn tensioner Autoconer 338, 5, X5



Guiding plate
146-001.688



Step motor
149-011.325



Tension disc
RIGHT
149-012.321



Toothed wheel
Z=31
149-012.344



Threading plate
148-008.299



Expansion bellows
148-020.535



Tensioning section
148-023.688



Tension disc
LEFT
148-022.811

Yarn tensioner Autoconer 6, X6



Guiding plate
146-001.688



Step motor
149-011.325



Tension disc
RIGHT
149-012.321



Toothed wheel
Z=31
149-012.344

**Yarn tensioner
Autoconer 6, X6**



Threading plate
148-008.299



Expansion bellows
148-020.535



Tensioning section
159-001.255



Tension disc
LEFT
148-022.811

**Yarn brake
Autoconer 338, 5, X5, 6, X6**



Stationary shear blade
STEEL
148-012.218



Pivoting shear blade
STEEL
138-015.744



Scissors blade
CERAMIC
159-003.996



Scissors blade
CERAMIC
159-003.997



Lower yarn sensor
159-655.075



Leaf spring
148-013.131

Original Parts Creeling Unit

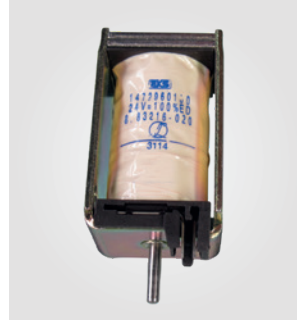
Bobbin creeling Autoconer 338



Yarn brake wire
148-022.968



Control lever
148-021.864



Electromagnet
24 V
148-023.311



Snarl brake
D/V
148-010.084



Hall-Sensor
400mm
885-910.061
Hall-Sensor
700mm
885-910.062



Bobbin peg
148-000.823



Transfer rod
148-008.893



Cylinder
149-013.824

**Bobbin creeling
Autoconer 5, X5**



Electromagnet
24 V
149-015.956



Cover
148-010.142



Half of cutter
STAINLESS STEEL
149-006.490



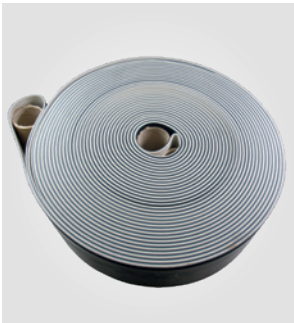
Scissors blade
STAINLESS STEEL
149-006.487



Cylinder
149-013.824

Original Parts Tube Conveyor

Tube conveyor belts Autoconer 338

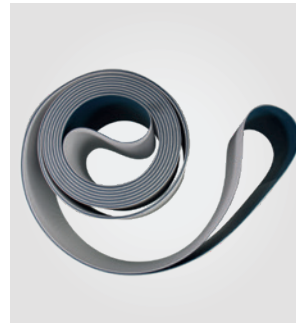


Conveyor belt
42 480mm
148-344.806



Conveyor belt
RIGHT **149-022.811**
Conveyor belt
LEFT **149-022.808**

Tube conveyor belts Autoconer 5, X5, 6



Conveyor belt
40 580mm
149-344.406



Conveyor belt
RIGHT **149-022.811**
Conveyor belt
LEFT **149-022.808**

Original Parts Package Doffer

Package doffer Autoconer 338, 5



Ultrasonic sensor
885-910.098



Light scanner
SCANNING-RANGE=300mm
148-656.060



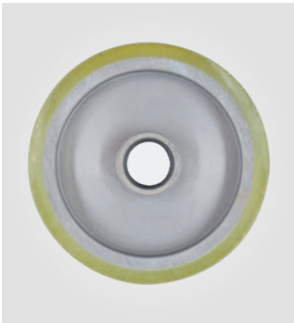
Motor
149-023.421



Toothed belt
400mm **834-310.184**
Toothed belt
535mm **834-310.185**
Toothed belt
600mm **834-310.133**

Original Parts Package Doffer

Package doffer Autoconer 338, 5



Pulley
146-009.539



Pulley
146-016.438



Thrust roller
148-023.694



Pushbutton
885-910.081



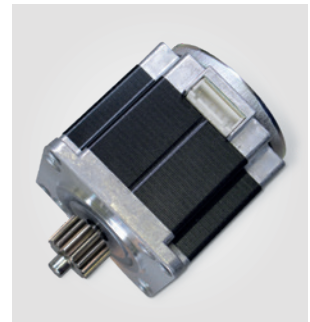
Cylinder
149-013.824



Leaf spring
148-013.481



Step motor
148-022.533



Step motor
149-012.058



Drive gear
148-024.123



Finger
148-011.110

Original Parts Package Doffer

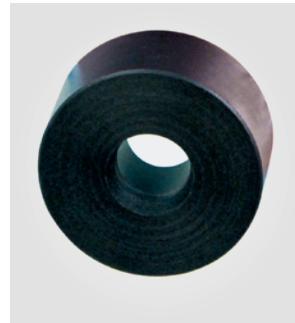
Package doffer Autoconer X5, 6, X6



Thrust roller
149-006.656



Cylinder
159-003.589



Roller
149-011.747



Toothed belt
252mm 159-003.817
Toothed belt
390mm 149-008.862

Package conveyor Autoconer 338, 5, X5



Friction-drum motor
148-013.507



Reflection type light sensor
150mm
889-623.050



Conveyor belt
42 800mm
148-352.544



DC/AC converter
149-670.091

Package doffer Autoconer 6



Friction-drum motor
148-013.507



Reflection type light sensor
150mm
889-623.050



Conveyor belt
42 800mm
149-342.727

**Package conveyor
Autoconer X6**



Friction-drum motor
171-009.512



Reflection type light sensor
150mm
889-623.050

Original Parts Bobbin Feed, Material Flow

**Transport sections
Autoconer 338**



Infeed belt
45 084mm
148-346.529



Retracting conveyor belt
41 218mm
148-346.629



Storage belt
6 601mm
148-021.582
Storage belt
13 143mm
148-021.587



Conveyor belt
495mm
148-009.000

Original Parts Bobbin Feed, Material Flow

Transport sections Autoconer 338



Transverse conveyor
928mm
148-009.218



Passage conveyor
1 859mm
148-008.160



Transverse conveyor
TEXTILE
149-014.070



Distribution belt
3 896.5mm
148-023.785



Pressing roll
COMPL.WITH WINDING
PROTECTION
148-015.292



Pressing roll
OILA
148-015.293



Pressing roll
COMPL.WITHOUT WINDING
PROTECTION
148-011.032



Pressing roll
OILA
148-011.028

Base plate Autoconer 338, 5



Geared motor
148-018.218



Drive motor
148-022.953



Step motor
149-012.056



Motor
149-023.421

Base plate
Autoconer 338, 5



Light barrier
148-670.133



Initiator
400mm **148-675.264**
Initiator
900mm **148-675.269**
Initiator
1 000mm **148-675.270**



Initiator
700mm
148-675.287
Initiator
800mm
148-675.288



Initiator
1 500mm
148-675.295
Initiator
4 900mm
48-675.702



Initiator
1 500mm
148-675.701



Hall-Sensor
600mm
148-660.106

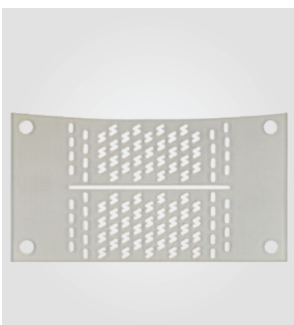


Hall-Sensor
800mm
148-675.562



Magnetic coil
1 000mm **148-675.330**
Magnetic coil
1 100mm **148-675.331**
Magnetic coil
3 000mm **149-655.622**

Yarn releaser
Autoconer 338, 5, X5, 6, X6



Friction lining
LONG
148-024.015
Friction lining
SHORT
148-024.016

Original Parts Bobbin Feed, Material Flow

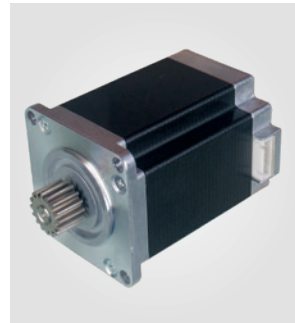
Processing centre Autoconer X5



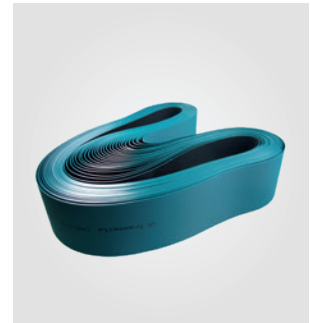
Toothed belt
285mm
149-021.905
Toothed belt
390mm
149-005.444



Step motor
149-007.498



Step motor
149-006.257



Conveyor belt
856mm **149-010.687**
Conveyor belt
1 078mm **149-005.486**
Conveyor belt
1 281mm **149-010.772**



Feeler arm
148-009.894



Feeler piece
LEFT
148-009.879
Feeler piece
RIGHT
148-009.884



Gate feeler fork
149-022.049



Light barrier
1 300mm
149-675.663



Pressing roll
149-010.599



Centering roll
149-010.596



Half of cutter
HARD METAL
148-020.698

BPS
Autoconer X6



Round belt
5 645mm
171-005.682



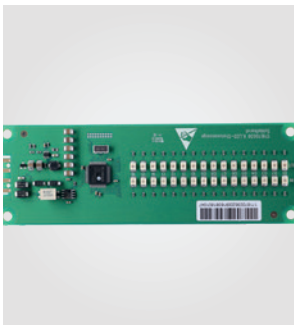
Yarn sensor
171-655.312



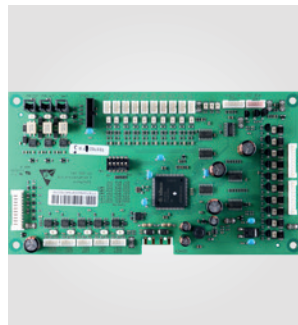
Valve block
BPS 4
171-007.362



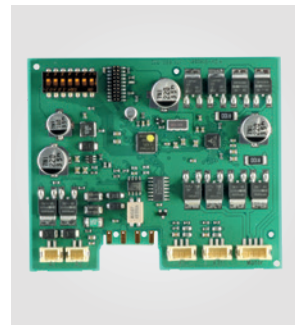
Valve block
BPS 14
171-006.088



LED status display
171-670.036



Universal control system
171-670.056



DV-Stepper-Advanced
171-670.041

Original Parts Bobbin Feed, Material Flow

Tube cleaning Autoconer X6



Scraper
171-008.597



Expansion bellows
171-005.056



Toothed belt
450mm **171-008.461**
Toothed belt
472mm **171-007.578**
Toothed belt
560mm **171-008.458**



Half of cutter
CC **171-006.753**
Half of cutter
HSS **171-005.829**



Buffer
147-004.857

Bobbin carrier Autoconer 338, 5, X5, 6



Magnet bracket
148-020.892

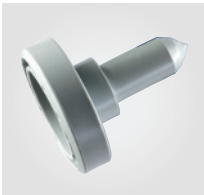


Chip box
159-001.860



Solenoid socket
149-008.172

SmartTray
Autoconer X6

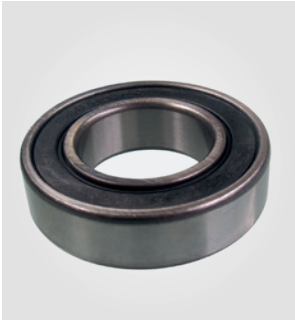


Tray 18.1X60	171-343.301
Tray 19.6X60	171-343.302
Tray 17.4X69	171-343.704
Tray 19.6X69	171-343.703
Tray 16.6X70	171-343.501
Tray 17.4X70	171-343.502
Tray 18.1X70	171-343.503
Tray 19.6X70	171-343.504
Tray 21.6X70	171-343.505
Tray 23.6X70	171-343.506
Tray 18.1X75	171-343.901
Tray 19.6X75	171-343.902
Tray 21.6X75	171-343.903
Tray 23.6X75	171-343.904

Original Parts Bobbin Feed, Material Flow

CTS

Autoconer 338, 5, X5



Grooved ball bearing
149-003.651



Conveyor belt
1 742mm
148-007.286
Conveyor belt
1 867mm
148-011.249



Drive shaft
159-003.982



Reflection type light sensor
150mm
889-623.057

CTS= Continuous Transfer Station

Diverse Original Parts, Accessories

Tools

Autoconer 338, 5, X5, 6, X6



Tensile tester
4 N
862-602.007
Tensile tester
15 N
862-602.008



Set wire
148-021.010



Test device
147-656.199

Application Recommendations

Smartsplicer for Autoconer 6, X6

For all applications

Splice all common yarns with the Smartsplicer. For special applications choose the Injection, Thermo or Elasto models. Your splicer comes ready for use, and with ceramic shears as standard.

Smartsplicer

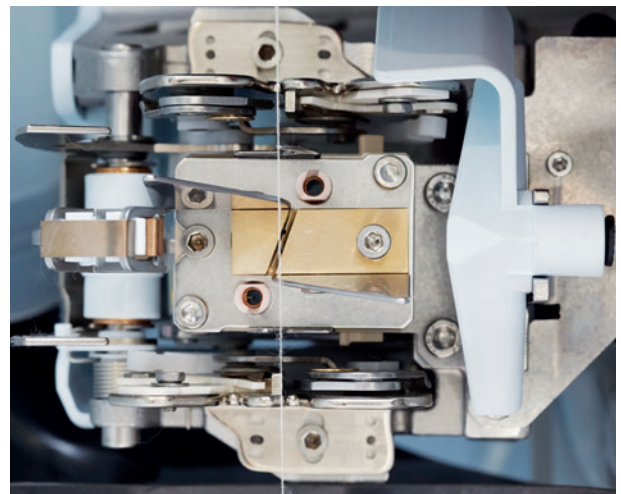
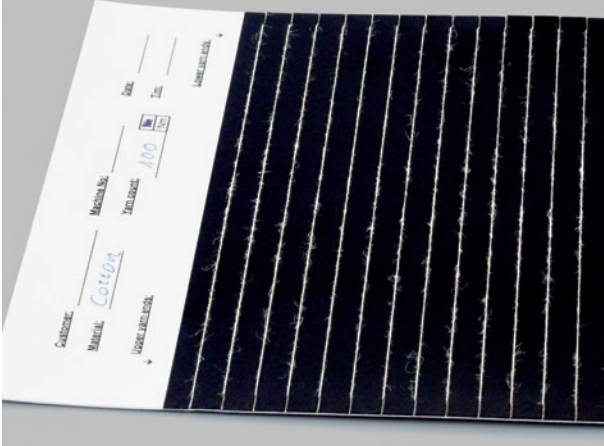
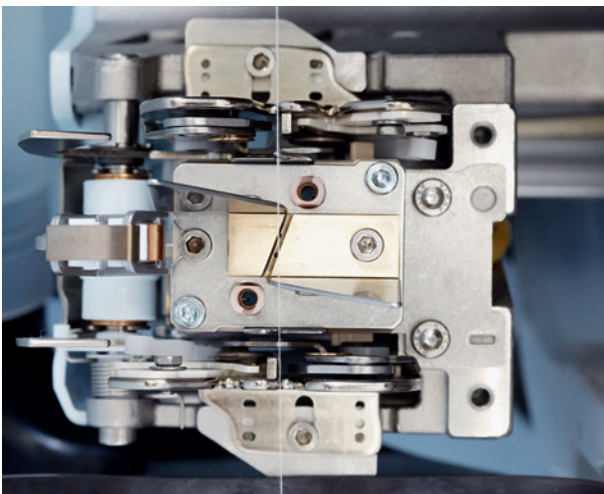
For all common standard yarns, compact yarns and blended yarns. Ease of handling and short, reliable splicing cycles make the more advanced pneumatic Smartsplicer a winner.

- Standard yarns CO, blends
- Compact yarns CO, blends
- PES, viscose, blends

Smartsplicer Injection

The splicing air is enriched with moisture by a metering valve. This is set simply and centrally at the Informator. For greater strength and an improved appearance.

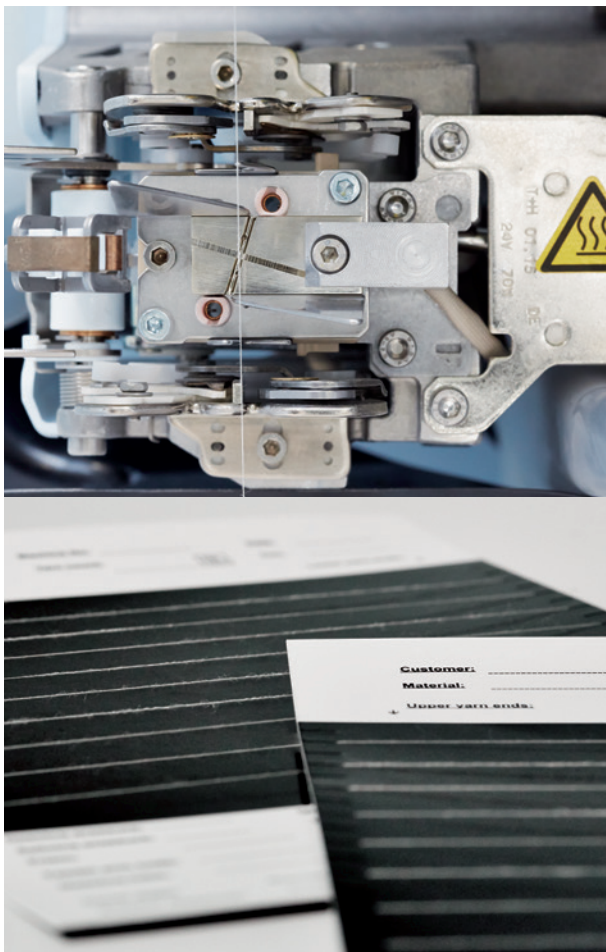
- CO yarns, compact yarns
- Denim yarns
- Linen yarns
- OE yarns
- Plied yarns



Smartsplicer Thermo

For wool and wool blends the splicing air can be heated incrementally. Just select the temperature centrally at the Informator.

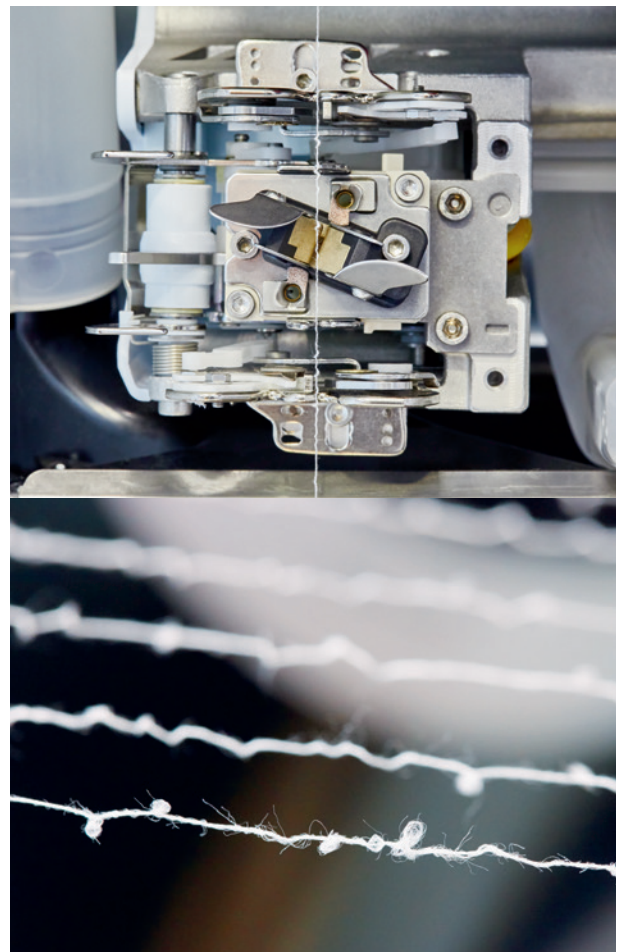
- Wool yarns, also with elastic content
- Wool blends, also with elastic content
- Synthetic yarns, also with elastic content



Smartsplicer Elasto

Cycle sequence for elastic core yarns, easily selectable centrally at the Informator. The combination Elasto/Thermo or Elasto/Injection is also recommended.

- Elastic core yarns
- Dual core yarns (Elasto/Injection)



Rieter Machine Works Ltd.

Klosterstrasse 20
CH-8406 Winterthur
T +41 52 208 7171
F +41 52 208 8320
machines@rieter.com
aftersales@rieter.com

Rieter India Private Ltd.

Gat No. 768/2, Village Wing
Shindewadi-Bhor Road
Taluka Khandala, District Satara
IN-Maharashtra 412 801
T +91 2169 664 141
F +91 2169 664 226

**Rieter (China) Textile
Instruments Co., Ltd.**

390 West Hehai Road
Changzhou 213022, Jiangsu
P.R. China
T +86 519 8511 0675
F +86 519 8511 0673

www.rieter.com



The data and illustrations in this brochure and on the corresponding data carrier refer to the date of printing. Rieter reserves the right to make any necessary changes at any time and without special notice. Rieter systems and Rieter innovations are protected by patents.

3428-v1 en 2309