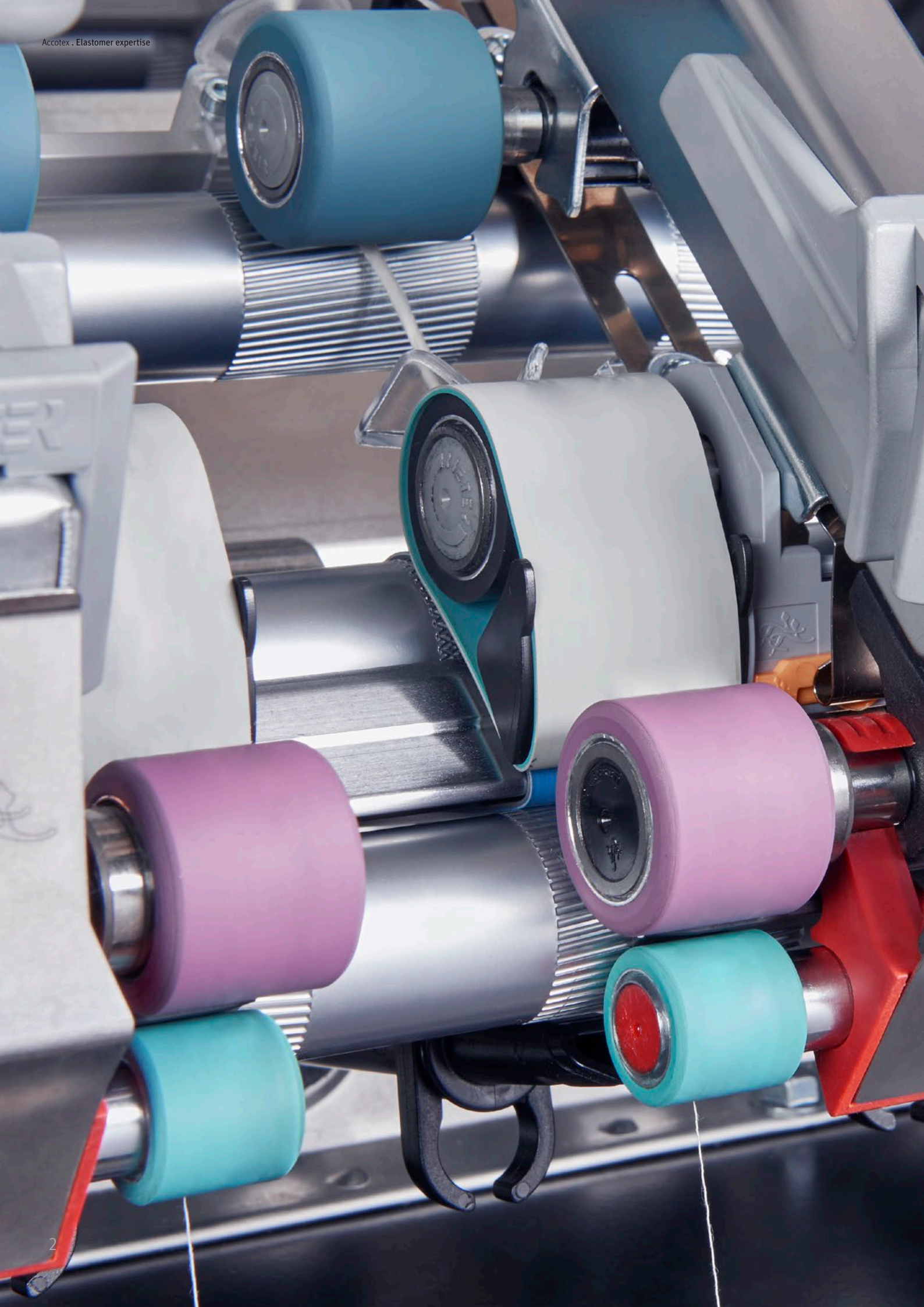


Elastomer Expertise

Product portfolio



Polymeric solutions
for textile processing



Elastomer Expertise

Accotex, the world's leading supplier of cots and aprons for the textile industry, is a subsidiary of the Rieter Group. Based in Muenster (Germany), Accotex creates customer value through system expertise, innovative solutions, after-sales excellence and a global presence. The leading position of Accotex cots and aprons is based on more than 100 years of elastomer expertise. The products are used, for example, in short and long staple spinning, rotor and air-jet spinning, and twisting.

Elastomer components by Accotex enable consistently high yarn quality in all process steps, resulting in a better fabric quality. The development team is continuously working on new elastomer compounds for even better results in the textile industry. Accotex aims to fulfil customers' needs with constant product quality in every order. Worldwide teams support customers in all matters around Accotex cots and aprons.

Accotex completes its extensive portfolio with the addition of DAYTEX, a leading manufacturer of shrinkage belts in the finishing as well as cots and aprons and texturing sector. Multinational teams are responsible for the development, manufacturing and distribution of DAYTEX products. A network of experienced representatives around the globe provides the highest level of service and expertise to ensure the optimal performance of our products.

4 Outstanding advantages

6 Cots

8 Aprons

10 ACC – new era in compound technology

12 Short staple spinning

12 Spinning preparation

14 Ring- and compact spinning

16 Air-jet spinning

18 Rotor spinning

20 Long-staple spinning

20 Spinning preparation

22 Ring spinning

24 Twisting

25 Glass fiber spinning

26 Accotex DAYTEX

27 Texturing

28 Weaving & knitting

29 Finishing

30 Accessory

OUTSTANDING

ADVANTAGES

Elastomer components

Highest Product Reliability

By using high quality, reliable and stable raw materials, the highest possible product reliability is achieved.

Perfect Running Behaviour

Perfect running behavior is characterized by fewer laps, fewer end breaks and fewer unbound fibers.

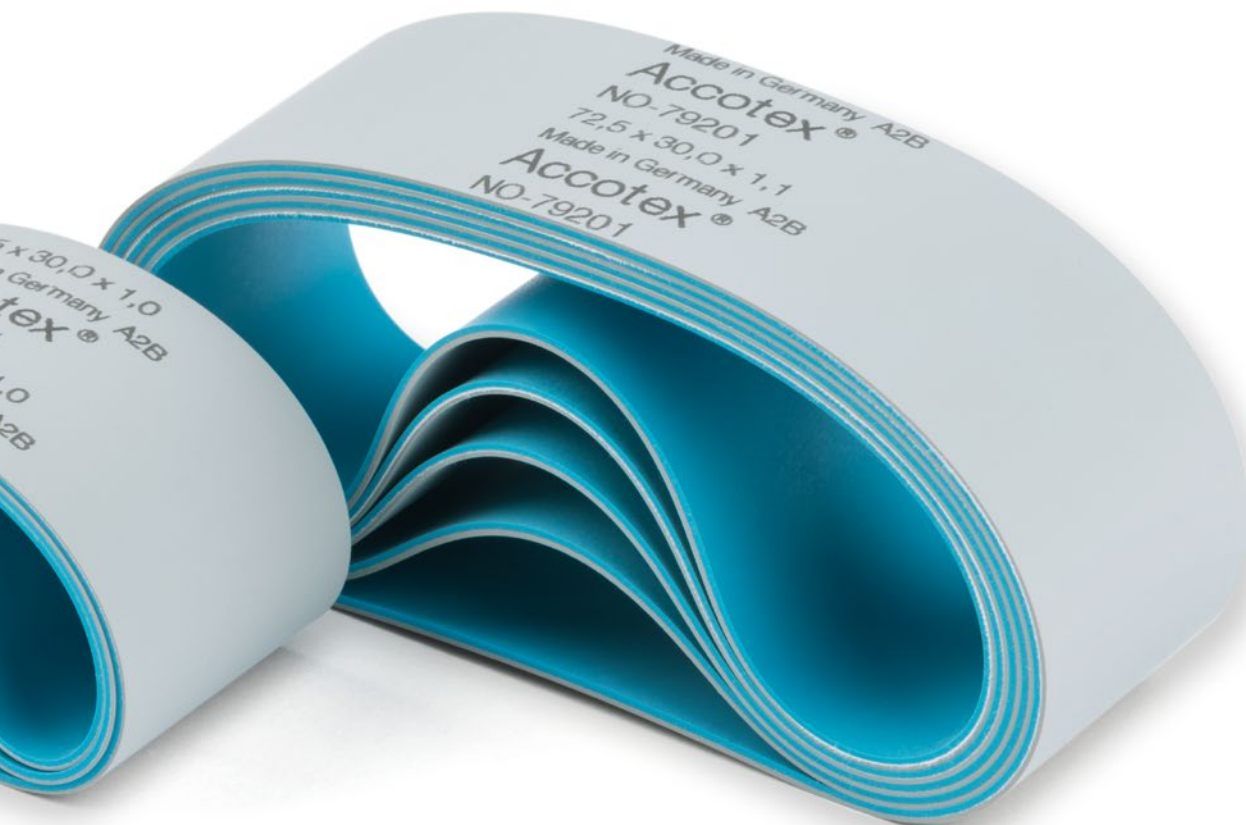


State-of-the-Art Production Facility

Stable compound quality from shipment to shipment due to highest sophisticated mixing technology.

Outstanding Life Time

Resistance to all common fiber finishes, paints and greases, as well as various climatic conditions over the entire service life.



Cots

Accotex Cots distinguish by an excellent performance and thus guarantee the production of a stable yarn quality over the whole cot lifetime. The perfect running behaviour is featured by less laps, less end breaks and less unbound fibers. All these properties result into less machine standstills over the cot life, which guarantees highest machine efficiency.

Quality standard

The highest product reliability is characterized by the outstanding product quality, which comes along with the usage of reliable and stable raw materials.

Manufacturing expertise

The state-of- the-art production facility with its newest sophisticated mixing technologies enables a stable compound quality from shipment to shipment.

Area of application

Accotex Cots are designed to meet the demands of all fibers and do perform best even under different climate conditions.



Types, sizes and surfaces

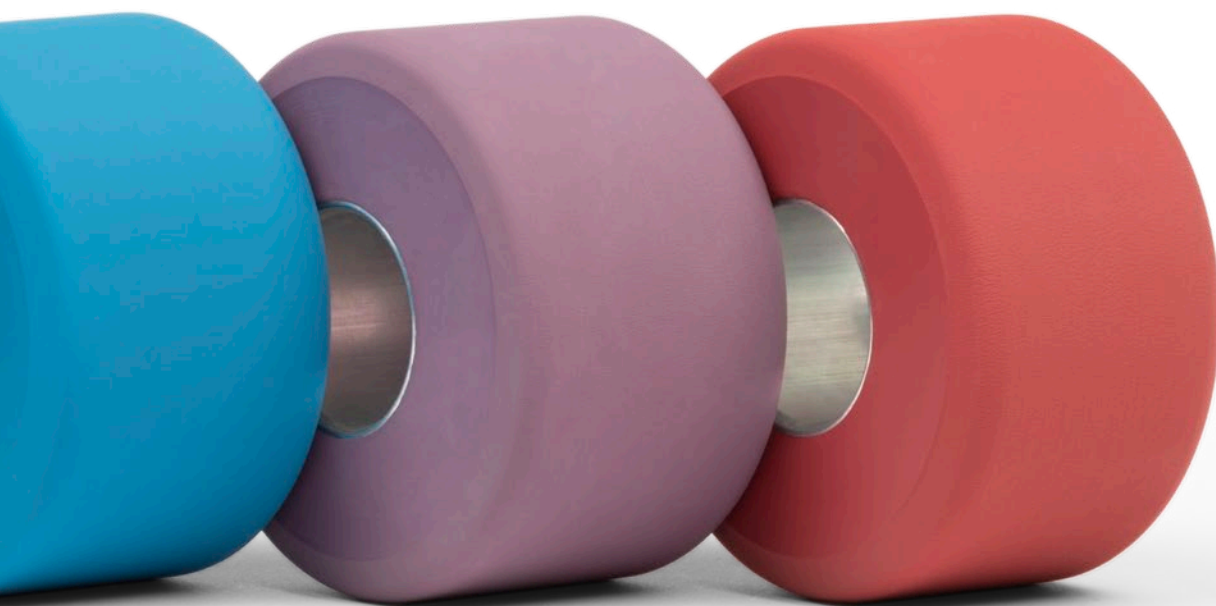
Pressfit cots are an invention by Accotex. They run virtually tension free, providing high performance and long durability.

Accosmart, the special cot concept, guarantees high and constant yarn quality with longer service life between the single grinding cycles.

Reinforced cots are used in applications where roller diameter or roller tolerance does not permit the use of Pressfit cots.

At a glance

- Excellent cot performance and thus stable yarn quality over the whole cot life
- Less laps, less end breaks, less unbound fibers Less machine stand stills over cot life means higher efficiency
- Usage of highest quality, reliable and stable raw materials
- Processing of all types of fibers under different climate conditions
- Stable compound quality from shipment to shipment due to highest sophisticated mixing technology
- perfect grindability



Aprons

Accotex Aprons distinguish by a perfect running behaviour, which comes along with good friction properties over the whole apron life time. Further Accotex Aprons are running vibration free, with highest possible crack resistance and lowest slippage tendency. Even apron breakages are very low for Accotex Aprons, which results into less downtime for the single spindle position.



The Standard

All these features result into less machine standstills or interruptions, which guarantees highest possible machine efficiency.

Area of application

All in all Accotex Aprons stand for a trouble free processing of all common fibers and under various climate conditions.

Manufacturing expertise

Highest compound technology combined with high-tech chemistry, selected high quality raw materials and state-of-the-art production facility with newest mixing technology results into highest product reliability.

Product promise

Precise product dimensions and highest dimensional stability characterize Accotex Aprons. The stable and consistent construction of the Accotex Aprons is the key for superior life cycles for all common fibers. Sufficient resistance to all popular fibre dressings, colours and greases comes along.

Types, sizes and surfaces

Accotex Aprons are available in a wide range of dimensions. Certain common sizes are even available with a knurled inside structure. Skived or skived and pre-glued versions are available in a wide range of dimensions.

What to expect

- Good friction properties and running behaviour over the whole apron life
- No vibration, no stress cracking, lowest slippage tendency
- Less breakages – less downtime of single spindles
- Less machine stand stills or interruptions – higher efficiency
- Trouble free processing of all common fibers under different climate conditions
- Highest compound technology and high-tech chemistry due to perfect raw material selection and sophisticated and consistent mixing technology
- Precise product dimension
- High dimensional stability
- Stable and consistent construction
- Superior life cycle for all common fibre types
- Sufficient resistance to all popular fibre dressings, colours and greases
- Skived or skived and pre-glued versions
- Certain sizes with knurled inner layer



ACC – New Era in Compound Technology

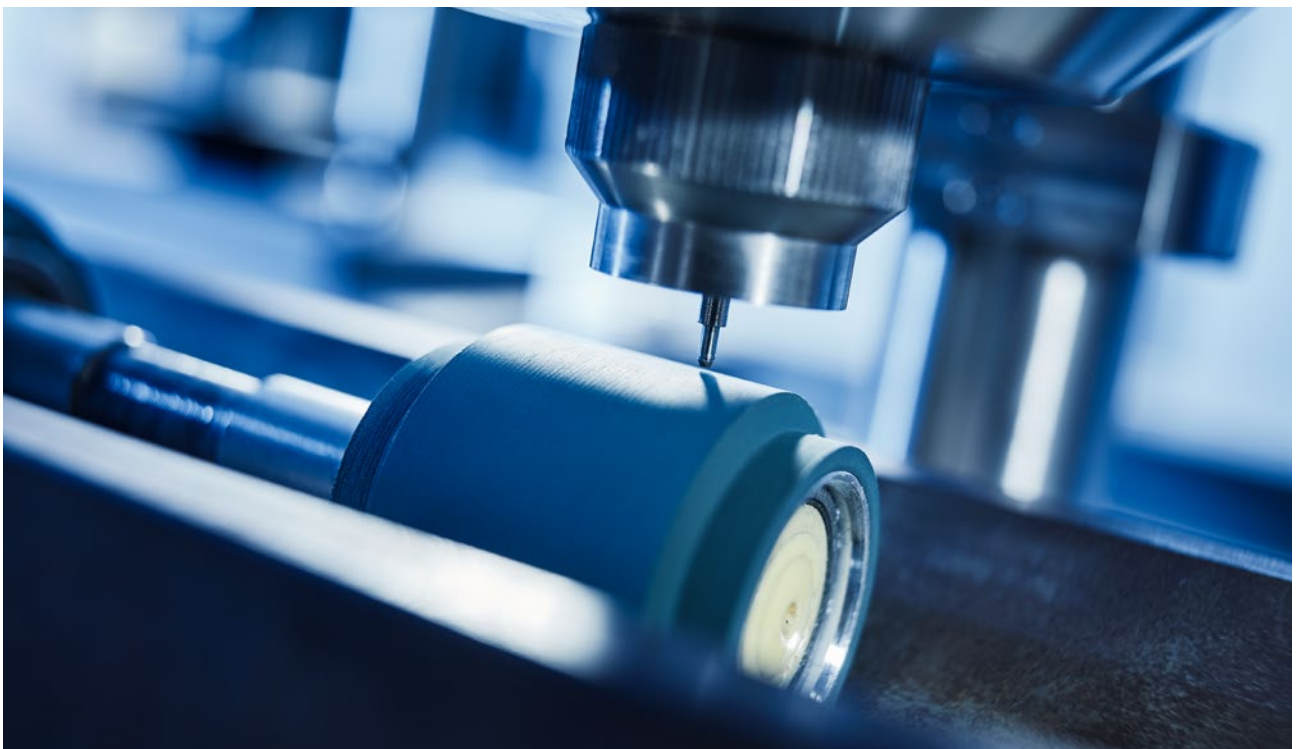
The ACC series

Accotex starts a new era in compound technology. The development of a new formulation – using high quality raw materials of the latest generation combined with latest rubber mixing technology – revolutionized rubber cots for spinning machines. The successor to the J series signifies the following: AC for Accotex and C for cots, the number after ACC indicates the Shore A hardness.

With the ACC series, Accotex sets new standards in cot quality. In the combination of the best raw materials, a revolutionary compound formulation and modern kneading machines, Accotex was able to create many improvements for the spinning sector.

Benefits

- Reduced deformation of the cot, resulting in longer intervals between grinding processes (up to 50% for compact applications)
- Flexibility, as suitable for all fiber types and no constant changeover on the machine is required.
- Exchange of both shore hardnesses in the drafting system, allowing the customer to better influence yarn qualities
- Improvement of elasticity



ACC64 + ACC68

The ACC64 and ACC68 compact spinning cots achieve an increase in grinding intervals of up to 50% and offer the spinner full flexibility due to the interchangeability of the delivery roller and the compact cot on compact spinning machines:

Up to 60 days grinding interval

Both cots exhibit unsurpassed creasing performance resulting in up to 50% longer service life without compromising yarn quality and grindability.

Highest flexibility

The ACC64 and ACC68 are suitable for any type of staple fiber and yarn count. Depending on the yarn count and type of fiber, the cots can be switched easily from front to delivery compacting roller and vice versa for full flexibility.

Excellent anti-lapping properties

Thanks to new polymer technology, the ACC64 and ACC68 cots offer excellent anti-lapping properties without the need for any additional treatment. Cot maintenance is reduced and machine downtime minimized.



ACC64 (left) and ACC68 (right)

ACC80

The latest Accotex series of cots for air-jet spinning, the ACC series, features high quality material and the latest rubber mixing technology. The ACC80 is a revolutionary rubber cot for air-jet spinning with outstanding performance:

Extended lifetime

Made of the best raw materials, an exceptional compound formulation and the latest mixing technology, the ACC80 cot reaches phenomenal grinding intervals, up to 50% longer than others in its category.

Improved grindability

The ACC80 sets a new benchmark in grindability. This revolutionary cot is faster and easier to bring to target accuracy when grinding.

Increased heat resistance

Adapted to the increased speeds of today's air-jet machines, the ACC80 offers exceptional heat resistance, even under 60 to 70 degrees Celsius.



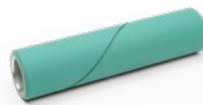
ACC80

Short-Staple Ring Spinning

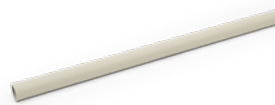
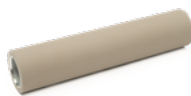
Spinning preparation



Drawing



Type and/or application	Draw frame roller cot	Draw frame roller cot	Draw frame roller cot
Fibers	Co	Co Blends MMF	Blends MMF
Product Color Shore A hardness	121 black 70	J-470 green 70	NO-714 light green 80



Type and/or application	Draw frame roller cot	Clearer tubes
Fibers	Co Blends MMF	All
Product Color Shore A hardness	J-490 gray 83	NO-780P gray

Co Cotton
MMF Manmade fibers

Combing



Type and/or application	Detaching roller cot	Detaching roller cot
Fibers	Co Blends MMF	Co Blends MMF
Product Color Shore A hardness	J-463 lavender 63	J-470 green 70



Type and/or application	Drafting unit roller cot	Drafting unit roller cot
Fibers	Co Blends MMF	Co Blends MMF Wo
Product Color Shore A hardness	J-476 blue 76	J-490 gray 83

Roving



Type and/or application	Front roller cot	Front and back roller cot
Fibers	Co Blends MMF	Co Blends MMF
Product Color Shore A hardness	J-476 blue 76	J-490 gray 83



Type and/or application	Top and bottom apron	Top and bottom apron	Apron cradle roller cot
Fibers	All	All	Co Blends MMF
Product Color Shore A hardness	NO-78210G, gray/green	NO-78210GX gray/gray	ME-480 black 80

Co Cotton
MMF Manmade fibers

Short-Staple Spinning

Ring- and compact spinning



Compact spinning



Front and compact roller cot



Front and compact roller cot



Compact apron

Type and/or application	Front and compact roller cot	Front and compact roller cot	Compact apron
Fibers	All	All	All
Product Color Shore A hardness	ACC64 berry 64	ACC68 olive 68	LongLife gray/gray



**Front roller cot
Compact applications**



**Front roller cot,
Compact + conventional applications,
medium counts**



**Front and back roller cot
for all applications,
medium coarse counts**

Type and/or application	Front roller cot Compact applications	Front roller cot, Compact + conventional applications, medium counts	Front and back roller cot for all applications, medium coarse counts
Fibers	Co (combed)	All	All
Product Color	Accosmart AS-6 lavender	Accosmart AS-7 green	Accosmart AS-8 blue
Shore A hardness	Working layer equals to 63 Shore A	Working layer equals to 70 Shore A	Working layer equals to 76 Shore A

Ring spinning



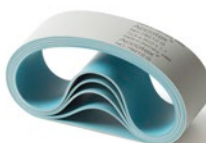
Type and/or application	Front roller cot		Front roller cot		Front roller cot	
Fibers	Co (combed)	≥ Ne 60	Co (combed) Blends MMF	≥ Ne 30 ≥ Ne 40 ≥ Ne 50	Co (carded and combed) Blends MMF	≥ Ne 18 ≥ Ne 20 ≥ Ne 30
Product Color Shore A hardness	J-460 burgundy 60		J-463 lavender 63		J-465 turquoise 65	



Type and/or application	Front roller cot		Front and back roller cot		Front and back roller cot	
Fibers	Blends	≥ Ne 30 ≥ Ne 30	Co (carded) Blends MMF	≥ Ne 20 ≥ Ne 30 ≥ Ne 30	Co (carded) Blends MMF	≥ Ne 10 ≥ Ne 18 ≥ Ne 18
Product Color Shore A hardness	J-468 brown 68		J-470 green 70		J-476 blue 76	



Type and/or application	Front and back roller cot for general purpose		Top and bottom apron		Top and bottom apron	
Fibers	All		All		All	
Product Color Shore A hardness	J-490 gray 83		NO-79201 gray/blue		NO-79201 knurled gray/blue	



Type and/or application	Top and bottom apron		Top and bottom apron		Top and bottom apron	
Fibers	All		All		All	
Product Color	NO-78210GX gray/gray		NO-78210G gray/green		NO-78210G ¹ gray/green	

¹ knurled version available with 72.5/76.3/79.0 mm inner diameter



Type and/or application	Apron cradle roller cot	
Fibers	All	
Product Color Shore A hardness	ME-480 black 80	

Co Cotton
MMF Manmade fibers

Short-Staple Spinning

Air-jet spinning



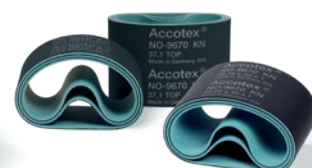
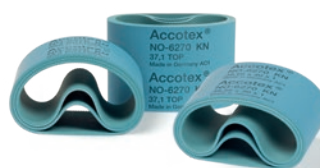
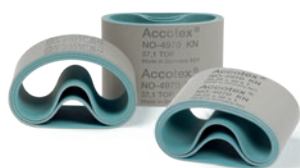
Air-jet spinning



Type and/or application	Front roller cot	Front roller	Front roller cot
Fibers	Co Blends MMF	Co Blends MMF	Co Blends MMF
Product Color Shore A hardness	ACC80 ² cinnamon 80	J-490 S ² reddish brown 72	J-476 ² blue 76



Type and/or application	Front roller cot	Apron cradle roller cot	Back roller cot
Fibers	Co Blends MMF	Co Blends MMF	Co Blends MMF
Product Color Shore A hardness	J-490 ² gray 83	118 dark gray 72	J-490 gray 83



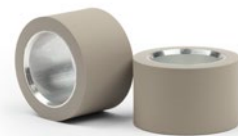
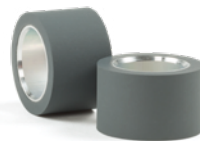
Type and/or application	Top and bottom apron	Top apron	Bottom apron
Fibers	100% Co Blends	Co Blends MMF	CV, PES or other MMF Blends
Product Color	NO-4970 KN gray/green	NO-6270 KN blue/green	NO-9670 KN black/green

² Bridge length:
MMF 15.8 mm
Blends: 17.8 mm
CO: 21.8 mm
2nd OD: 25.0 mm

Co Cotton
MMF Manmade fibers

Short-Staple Spinning

Rotor spinning



Type and/or application	Nip roller cot	Nip roller cot	Nip roller cot
Fibers	Co Blends MMF	Blends MMF	All
Product Color Shore A hardness	121 black 70	118 dark gray 72	J-490 gray 83

Co Cotton
MMF Manmade fibers



Long-Staple Spinning

Spinning preparation



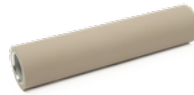
Blending & Drawing



Type and/or application	Front and back roller cot
Fibers	Wo Blends MMF
Product Color Shore A hardness	J-490 EasyFit gray 83

Wo Wool
MMF Manmade fibers

Finisseur



Type and/or application	Front and back roller cot	Front and back roller cot	Top and bottom apron cot
Fibers	Wo MMF	Wo Blends MMF	Wo Blends MMF
Product Color Shore A hardness	J-470 green 70	J-490 gray 83	NO-78210X gray/dark-gray

Roving



Type and/or application	Front and back roller cot	Apron roller cot	Top and bottom apron
Fibers	Wo Blends MMF	Wo	All
Product Color Shore A hardness	J-490 gray 83	ME-480 black 80	NO-78210GX gray/gray



Type and/or application	Top and bottom apron
Fibers	All
Product Color	NO-79201 knurled gray/blue

Ballon cots



Type and/or application	Ballon cot
Fibers	All
Product Color	No-780B ³ gray

³ Wall thickness (mm): 1.7, 2.0, 2.2, 2.5

Wo Wool
MMF Manmade fibers

Long-Staple Spinning

Ring spinning



Ring spinning



Type and/or application	Front roller cot		Front roller cot	Front roller cot
Fibers	Wo	≥ Ne 80	Wo	Wo Blends MMF
Product Color Shore A hardness	J-460 burgundy 60		J-463 lavender 63	J-470 green 70



Type and/or application	Front roller cot	Back roller cot	Apron roller cot
Fibers	Wo Blends	Wo Blends MMF	All
Product Color Shore A hardness	J-476 blue 76	J-490 gray 83	ME-480 black 80



Type and/or application	Front and compact roller cot	Front and compact roller cot	Compact apron
Fibers	All	All	All
Product Color Shore A hardness	ACC64 berry 64	ACC68 olive 68	LongLife gray/gray



Type and/or application	Top and bottom apron	Top and bottom apron	Balloon Cot
Fibers	All	All	All
Product Color	NO-78210GX gray/dark-gray	NO-79201 gray/blue	No-780B ³ gray

³ Wall thickness (mm): 1.7, 2.0, 2.2, 2.5

Wo Wool
MMF Manmade fibers

Twisting



Type and/or application

Twister Cot

Sleeve

Fibers

All

All

Product | Color | Shore A hardness

J-490 | gray | 83

TW-450X | gray/gray | 65

Glass Fiber Spinning



Type and/or application	Glass forming apron	Glass forming apron	Glass forming apron
Fibers	Coarse	Fine	Fine
Product Color Shore A hardness	946 black 1-2 μ Ra	946 FG3 black < 0.85 μ Ra	518 FG3 ⁴ + 519 FG3 ⁴ black < 0.85 μ Ra



Type and/or application	Glass forming apron	Glass forming apron
Fibers	Fine	Ultra fine
Product Color Shore A hardness	546 FG3 black \leq 0,5 μ Ra	518 SF ⁴ black < 0.2 μ Ra

⁴ Additional product differentiation: depending on the sizing formulation

Accotex DAYTEX

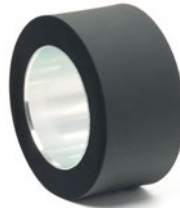
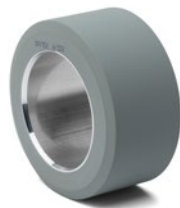
Texturing and finishing products

Accotex DAYTEX is the leading manufacturer of products for texturing and finishing applications. Experienced experts in the field of rubber applications as well as natural rubber from approved plantations in combination with long standing manufacturing expertise ensure the constant product quality.

Multi-national teams are responsible for the development, manufacturing and sale of Accotex DAYTEX products.



Texturing



Type and/or application	Texturing cot	Texturing cot
Fibers	All MMF	All MMF
Product Color Shore A hardness	836 gray 75	121 black 70






Type and/or application	Texturing apron	Texturing apron
Fibers	All MMF	All MMF
Product Color	203 T gray/light gray	T-4347 red/gray



MMF Manmade fibers

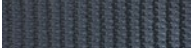


Weaving & Knitting




Roll coverings





			
Compound	Cork & rubber	Cork & rubber	Cork & rubber
Backing Surface Finish	Co Smooth	Co Smooth	Co+PES Smooth
Product Color Shore A hardness	DK153 with PSA black 45 +/- 10	DK154 (without PSA) black 45 +/- 10	DK107 tan 45 +/- 10

			
Compound	Nitrile rubber	Nitrile rubber	Carboxylated rubber
Backing Surface Finish	Co Smooth	Co Sand finish	Co + PES Sand finish
Product Color Shore A hardness	N0732 gray 42 +/- 5	SF150 orange 60 +/- 5	G520 white 75 +/- 5

			
Compound	Carboxylated rubber	Natural rubber	Natural rubber
Backing Surface Finish	Co + PES Rough top	Co Smooth	Co + PES Embossed
Product Color Shore A hardness	G330 gray/yellow 65 +/- 5	G530 tan 45 +/- 5	G530E tan 45 +/- 5

			
Compound	PVC	Nitrile rubber	Nitrile rubber
Backing Surface Finish	Co + PES Smooth	Co + PES Sand finish	Co + PES Smooth
Product Color Shore A hardness	BR14 light blue 72 +/- 5	G320 blue 60 +/- 5	G310 dark blue 65 +/- 5

			
Compound	Nitrile rubber	Natural rubber	
Backing Surface Finish	Co + PES Rough top	Co + PES Rough top	
Product Color Shore A hardness	G310E dark blue 65 +/- 5	SF150 tan 39 +/- 5	

Co Cotton
PES Polyester

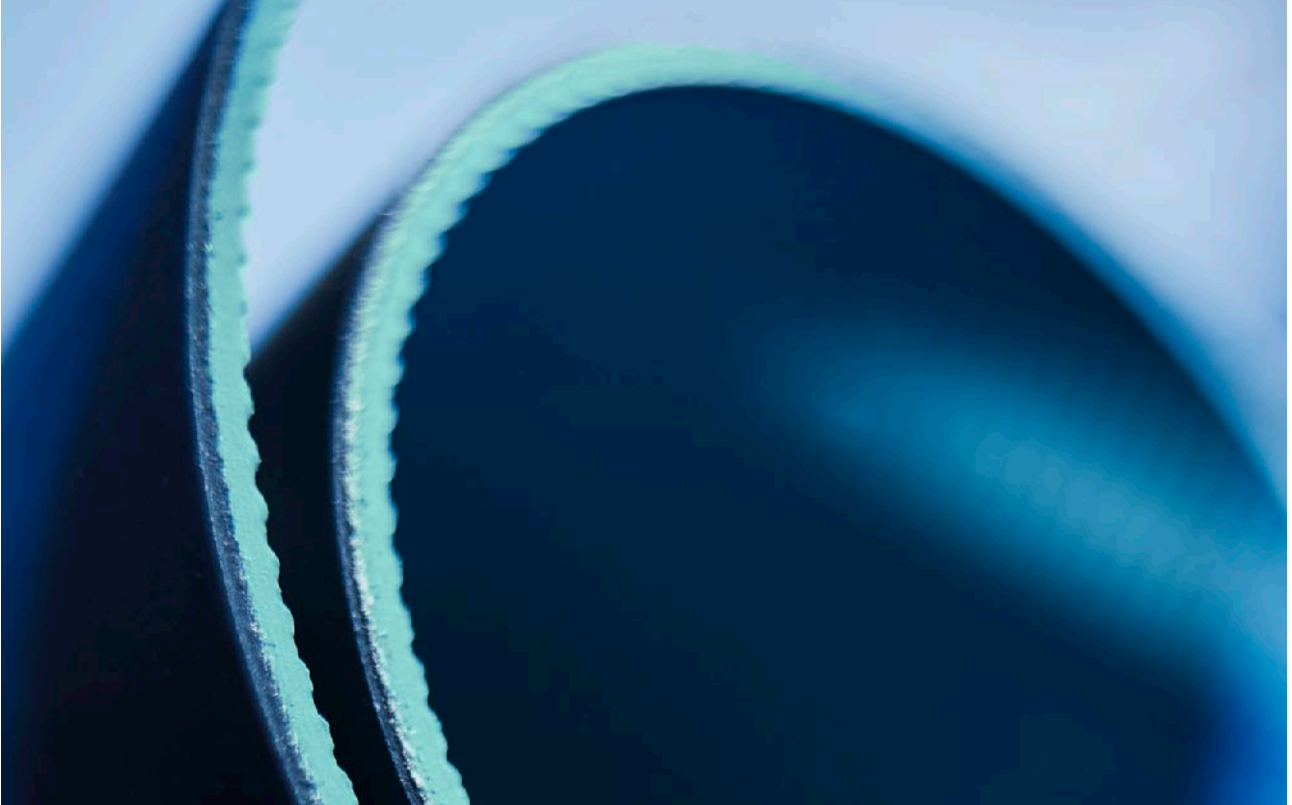
Finishing

Sanforizing



Type and/or application	Shrinkage belt
Fibers	From heavy to light fabric including comfit and knitted goods
Product Color Shore A hardness	DAYTEX 768 light tan 38 – 40

Accessory



Clearer cover



Type and/or application	Clearer cover
Fibers	All
Product Color	NO-780P gray

DAYTEX Patching kit



Type and/or application	Shrinkage belt repair kit
Product Color	DAYTEX patching kit red

Bonding aprons



Type and/or application	Bonding apron	Bonding apron	Bonding apron
Product	Bonding glue Accostick 84	Bonding press NU65	Reactivator pen





Rieter Components Germany GmbH

Accotex

Branch Muenster

Gustav-Stresemann-Weg 1

48155 Muenster

Germany

T +49 251 60938 0

info@accotex.com

www.accotex.com

The data and illustrations in this brochure and on the corresponding data carrier refer to the date of printing. Accotex reserves the right to make any necessary changes at any time and without special notice. Accotex systems and Accotex innovations are protected by patents.

3427-v2 en 2311